

, "

, "

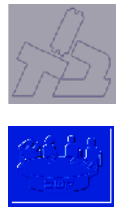
:

" ' , " "

- ' , - - "

,

TEL AVIV UNIVERSITY  אוניברסיטת תל-אביב
 The Gordon H. Coobin Faculty of Social Sciences המכללה למדעי החברה ביהושע טרומן
 The E. F. and Lucille Cohen Institute for Public Opinion Research המכון לביקורת דעה
 2012



16-21

16-21

-
-

: 46% -

54%

307

:

—

45%

13%

34%

8%

44% -

56%

299

—

,16

■

:

,

;

(1)

(2)

;

(3)

—

;

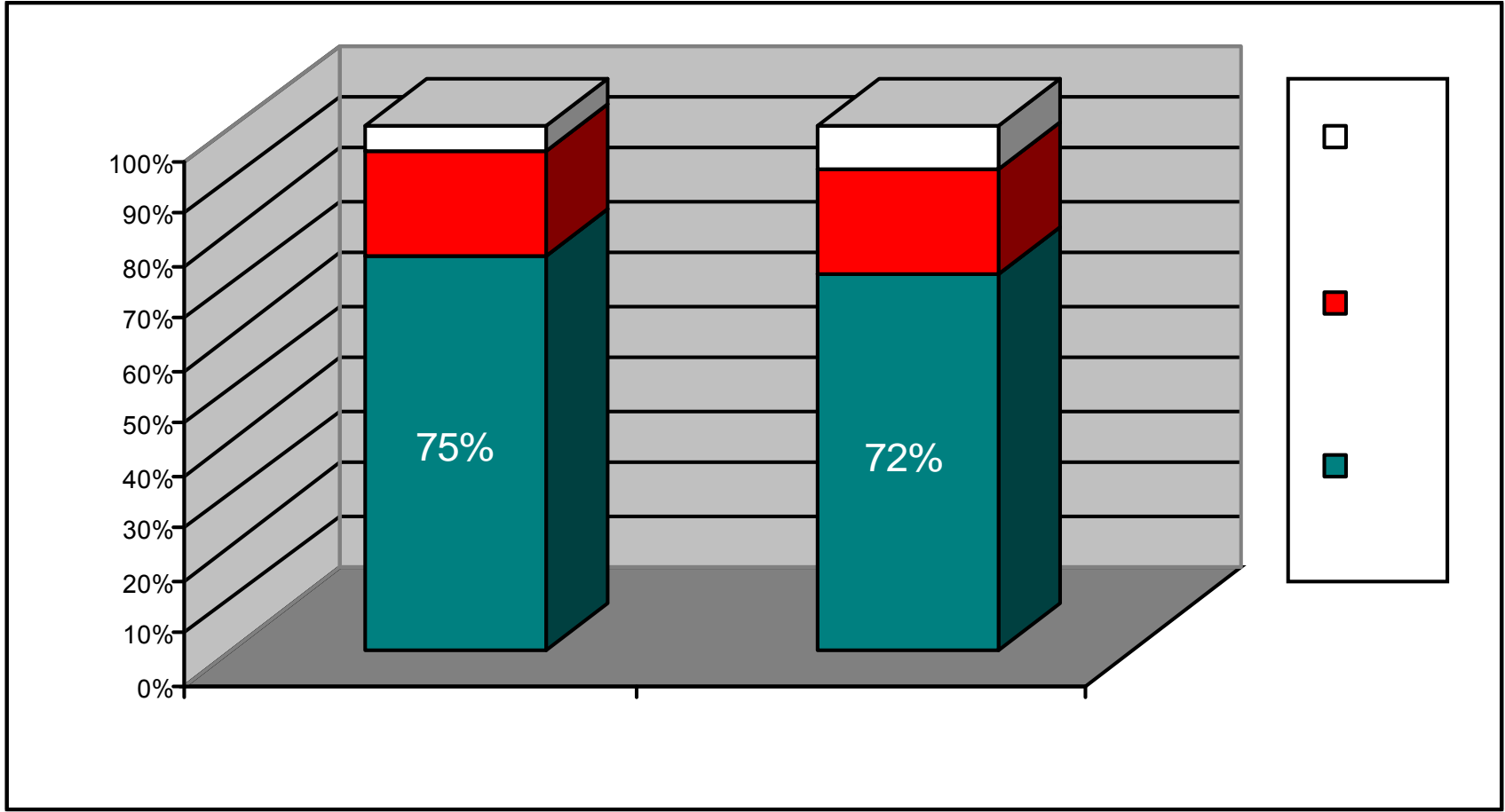
(4)

■

,

,

?

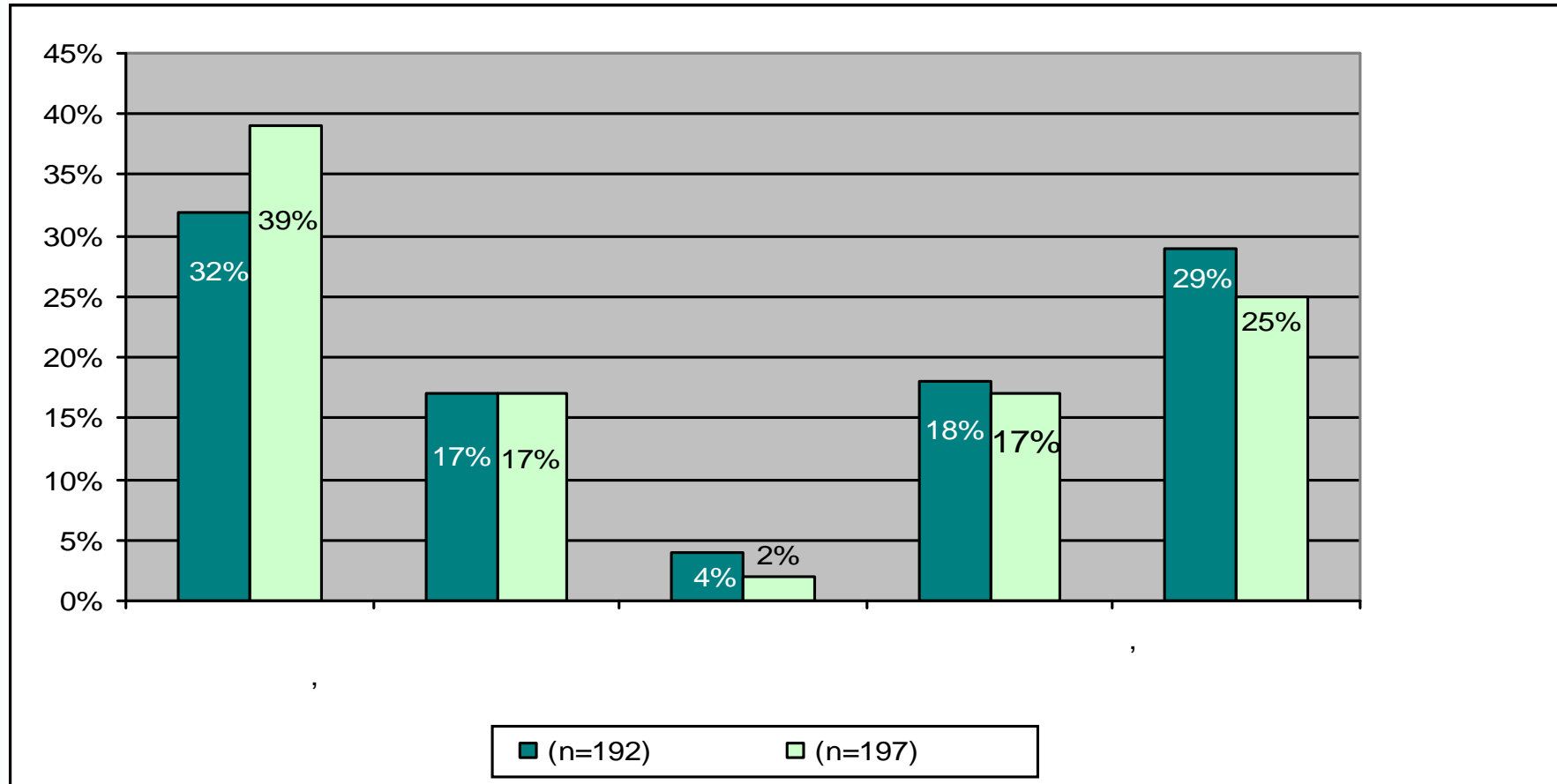


י

י

*

אזהרת מחנה



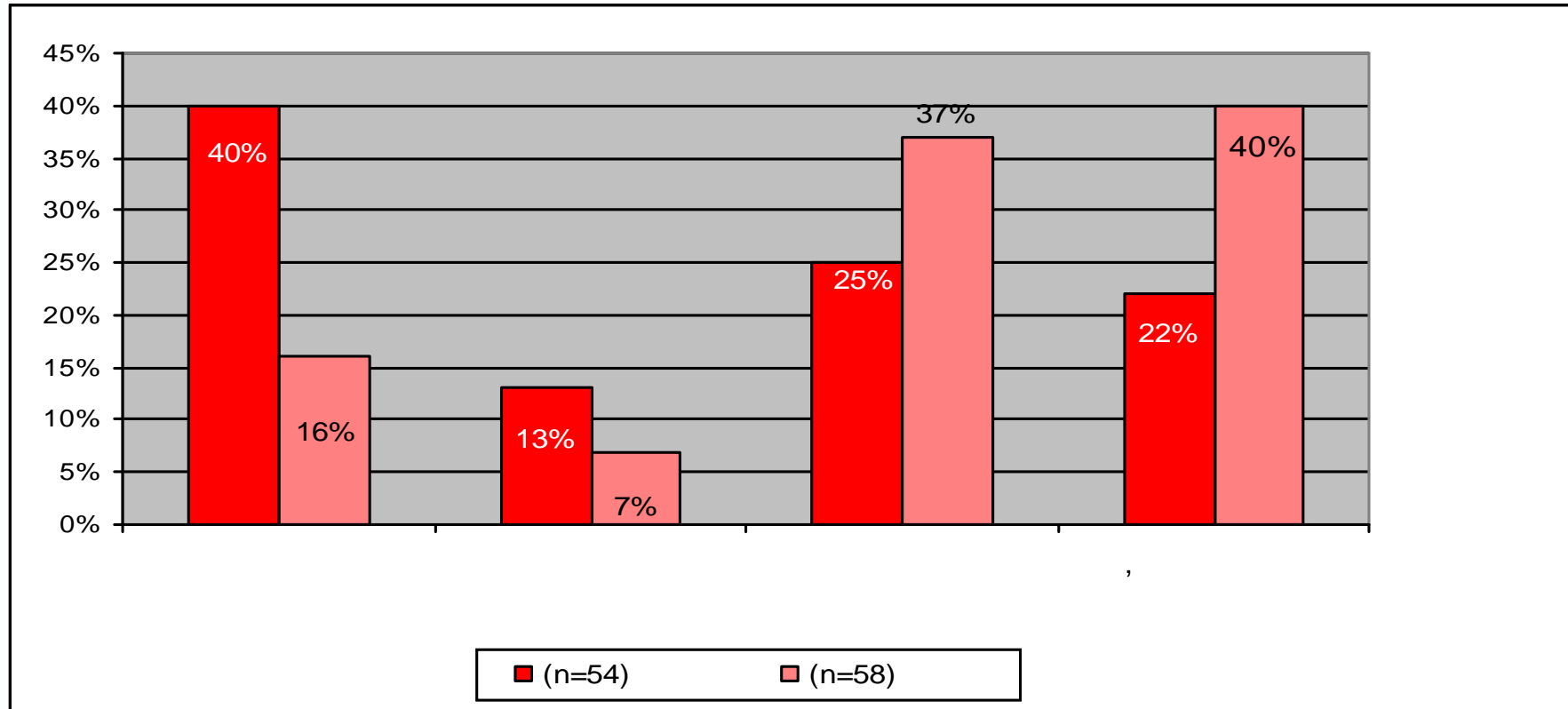
(72%, 75%)

"

*

*

אחר ניתוח

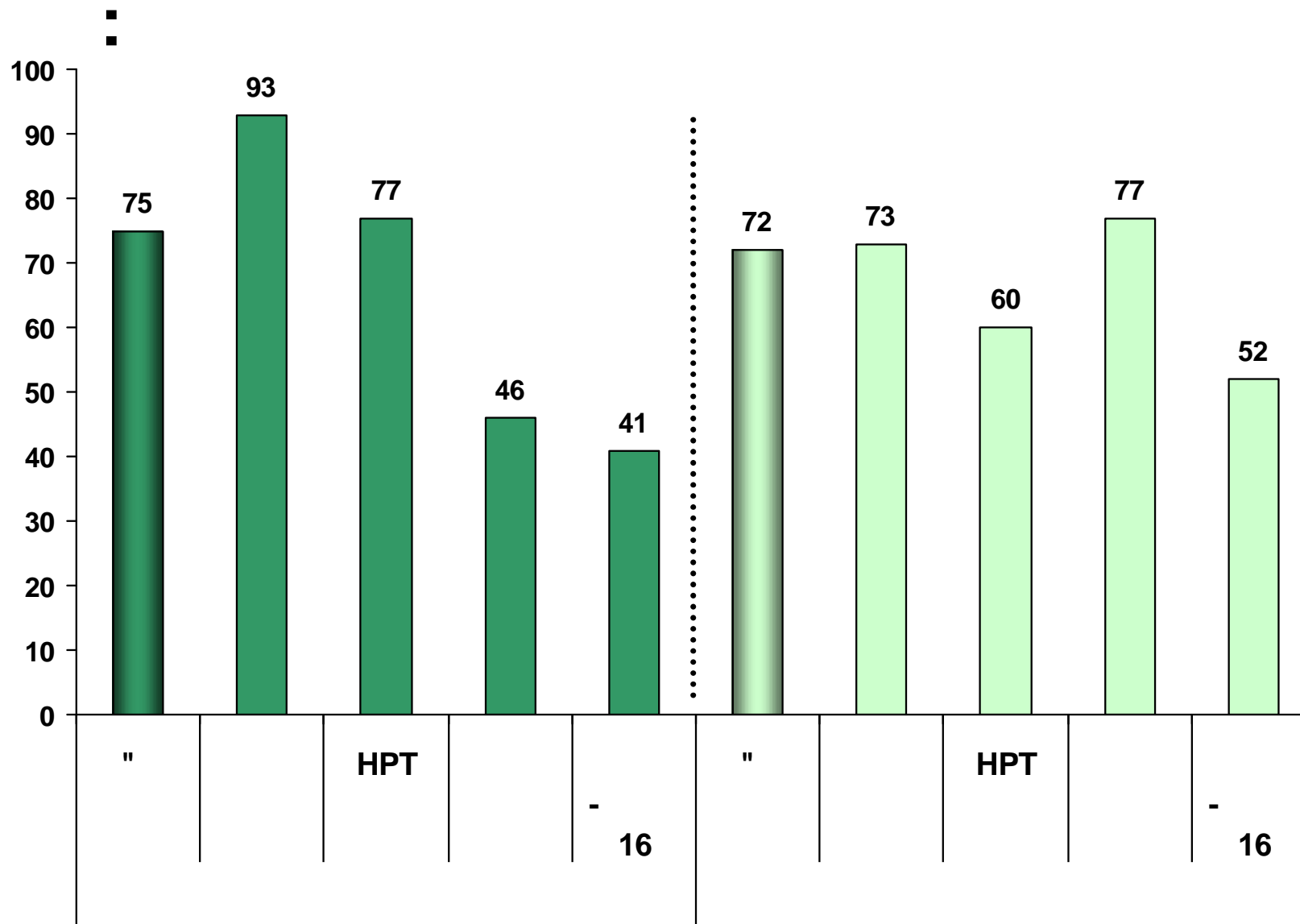


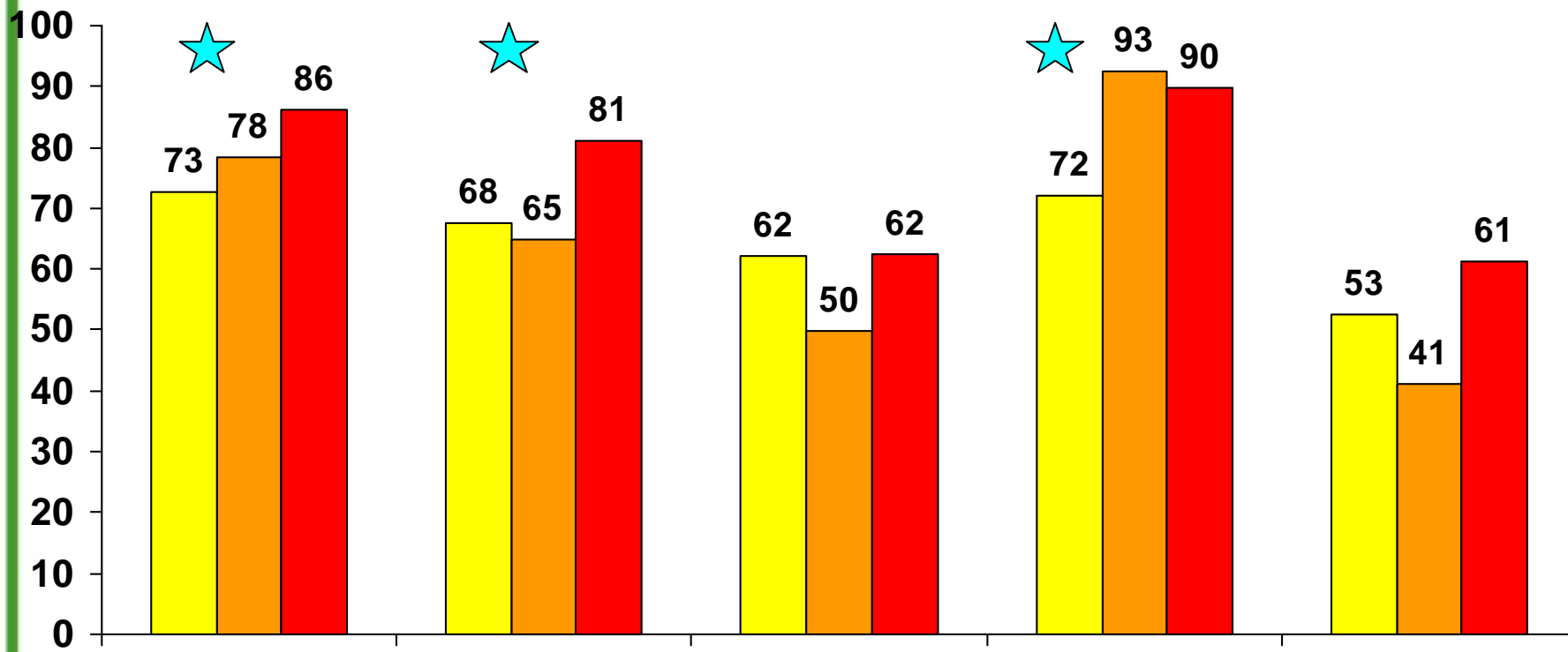
(

20%)

"

*

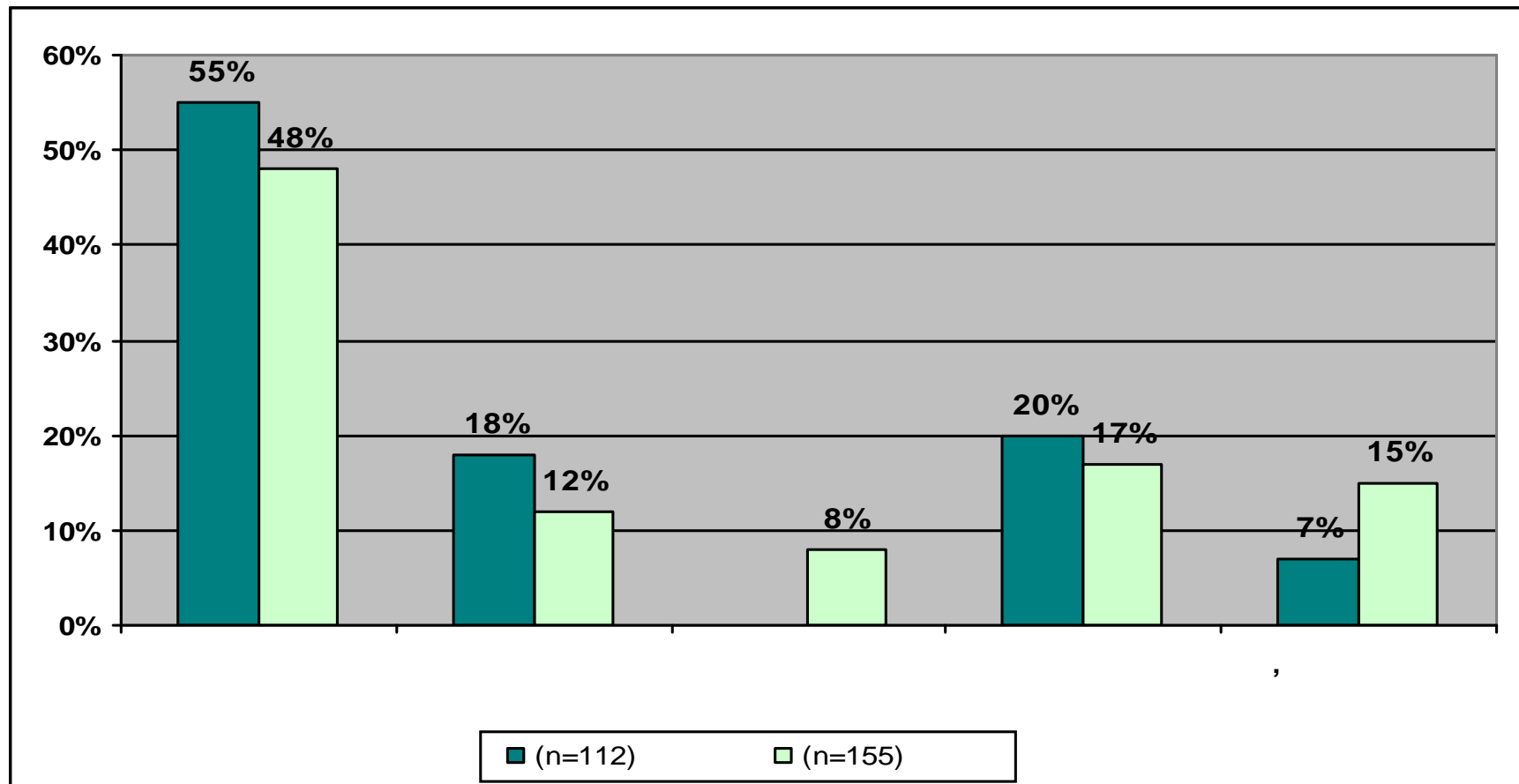




*

■
■

על פי מחנה



(52% , 41%)

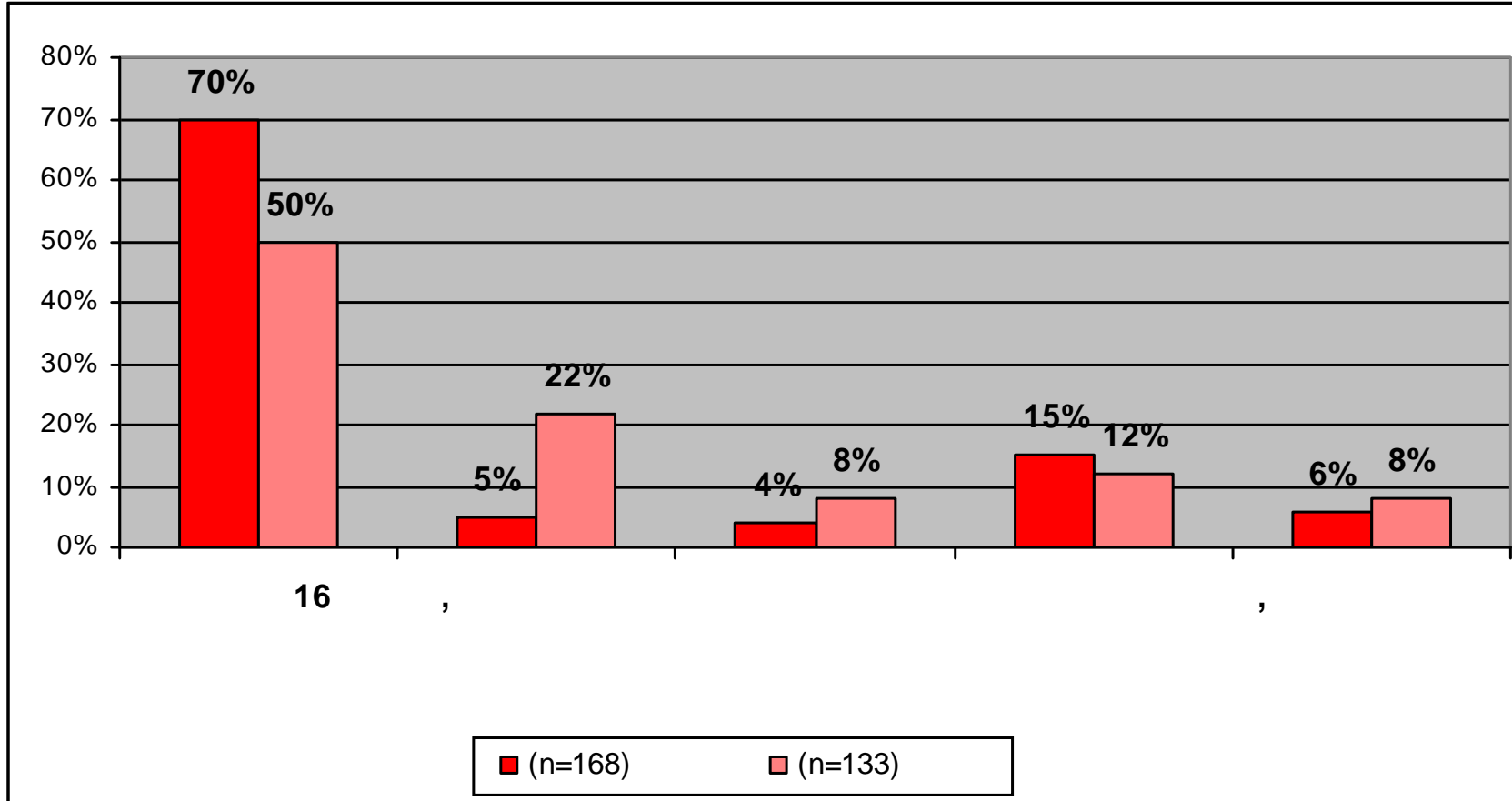
"

*

*

■

אזהרות

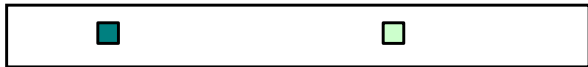
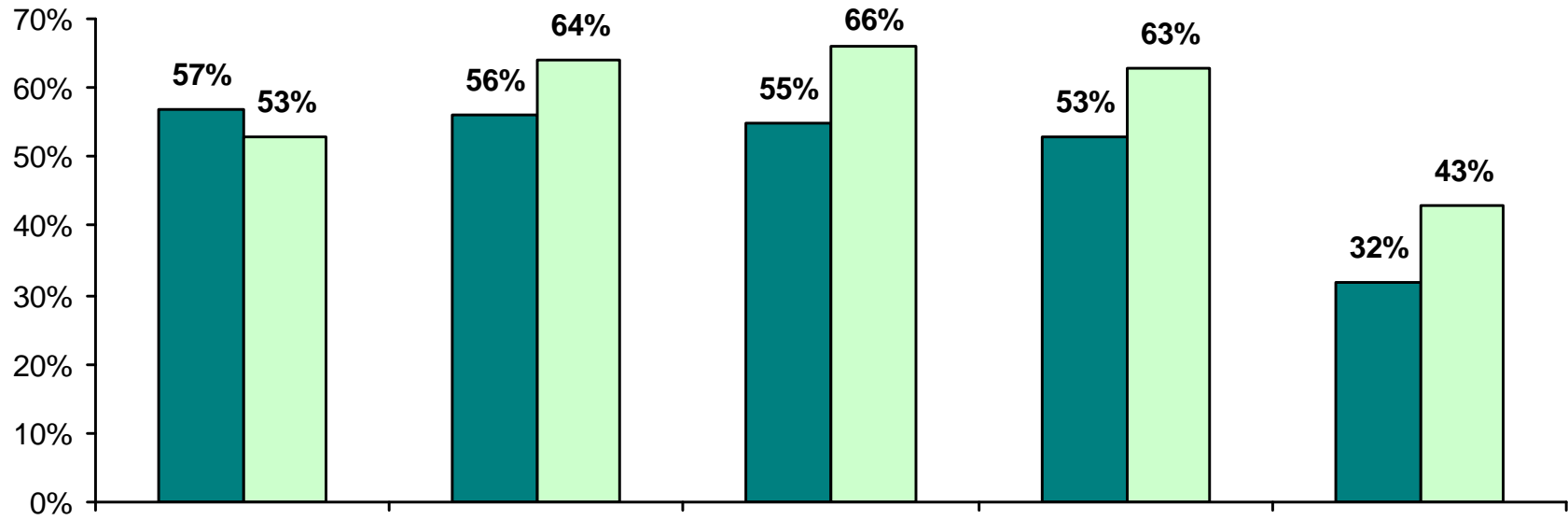


(47%, 58%)

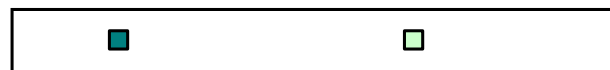
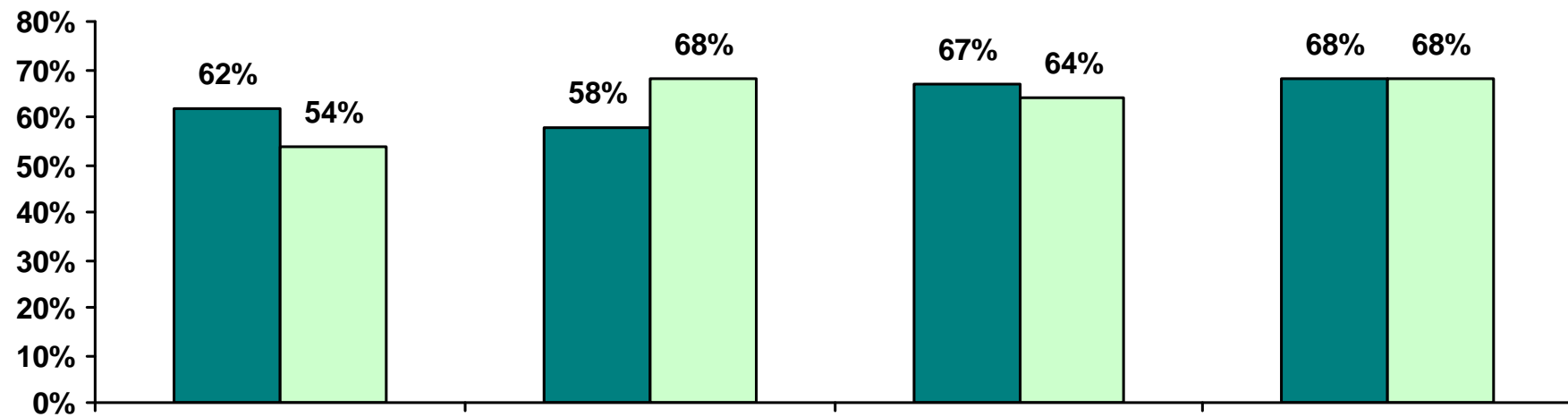
"

*

■
■



*

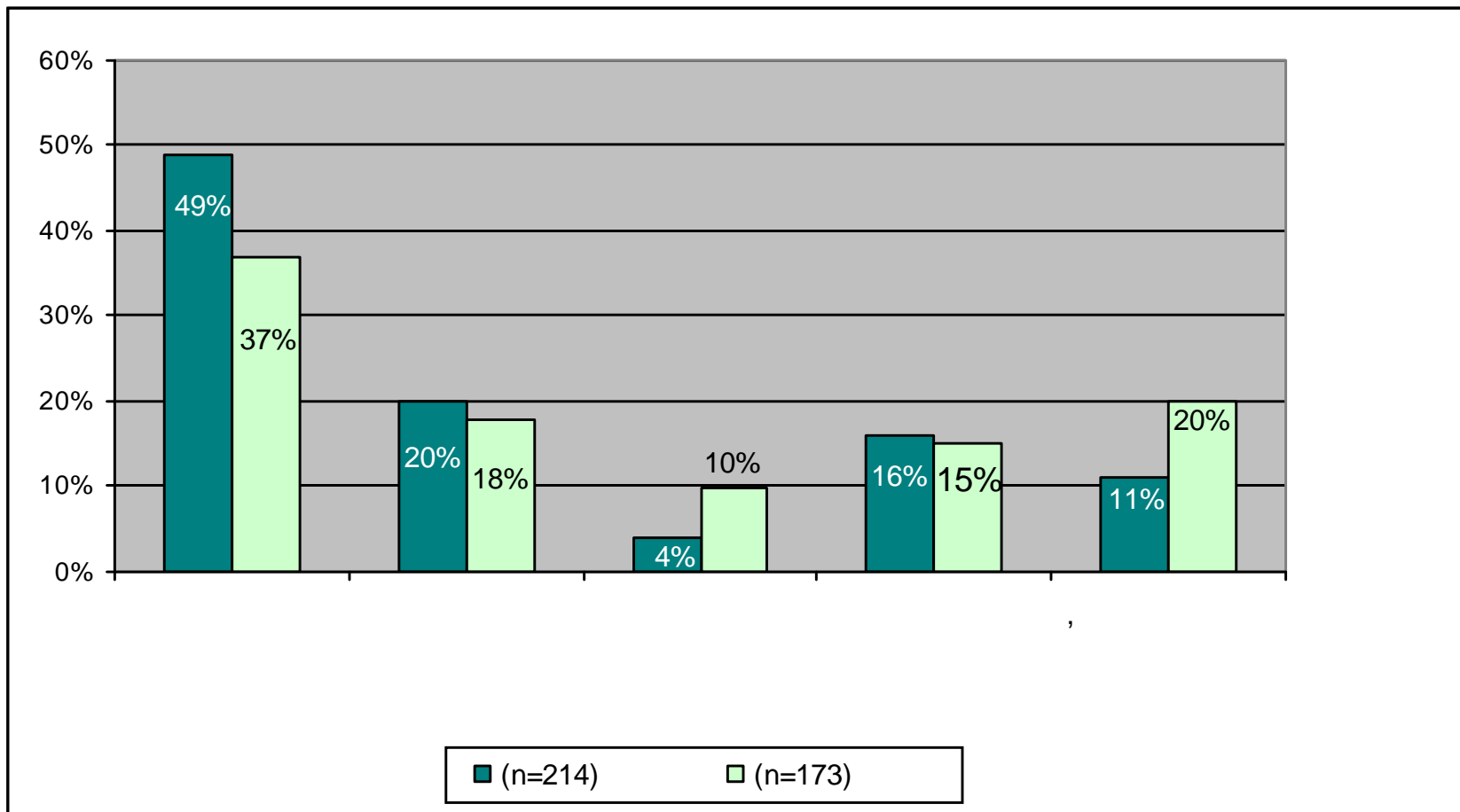


*

*

שאלה פתוחה

:HPT



(60%, 77%)

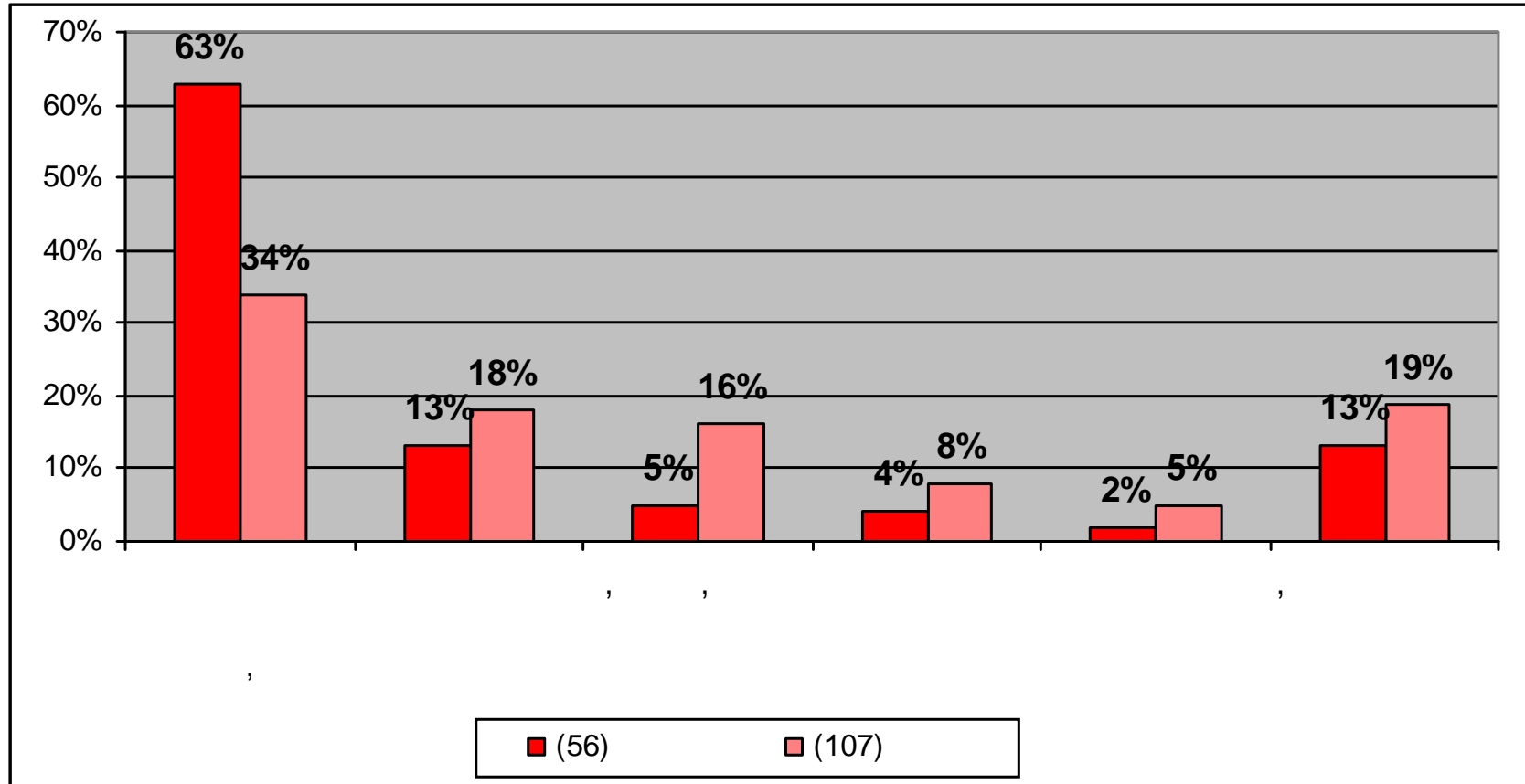
"

*

:HPT

*

אזהרה

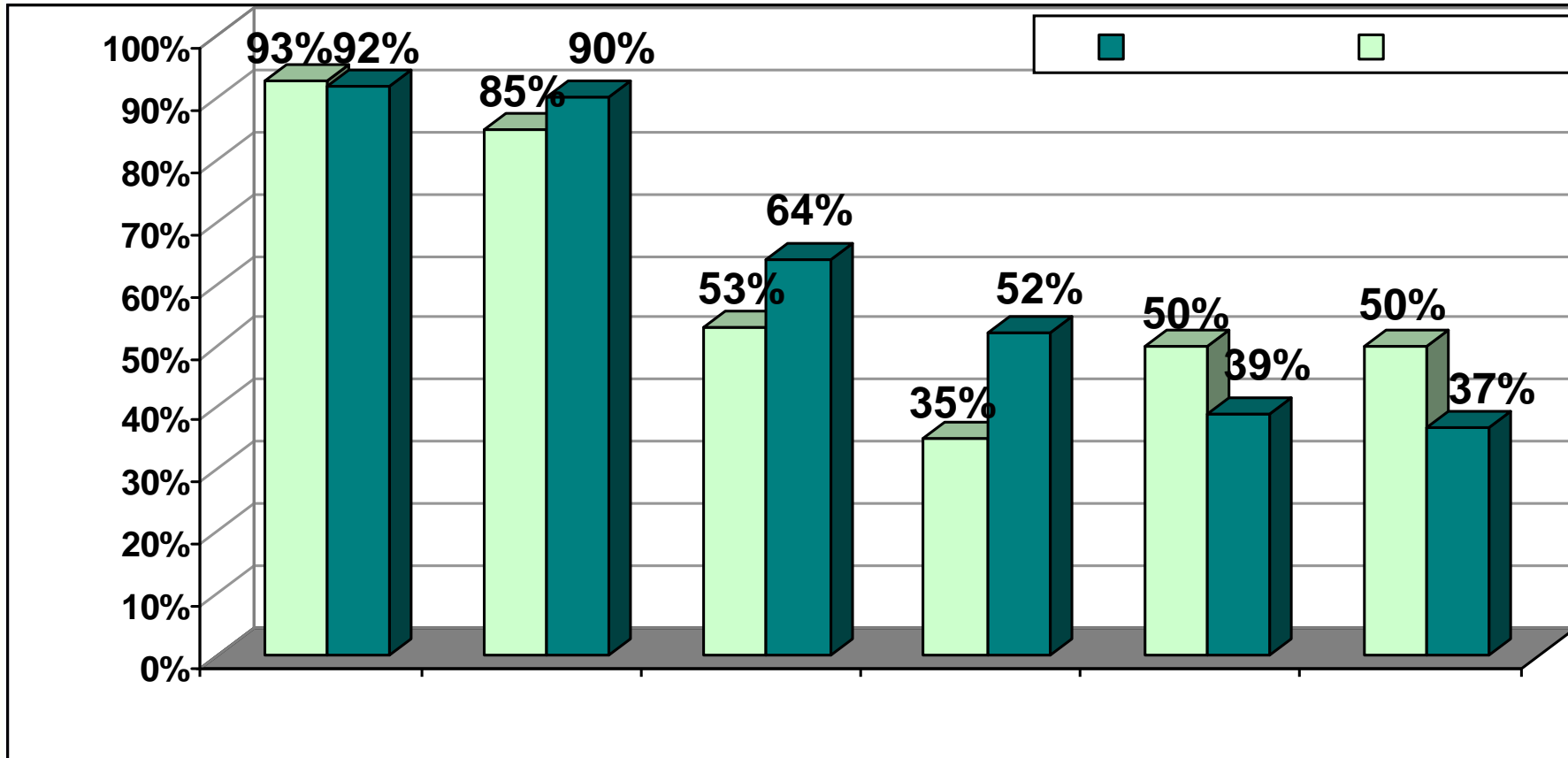


(38% , 20%)

"

*

:HP

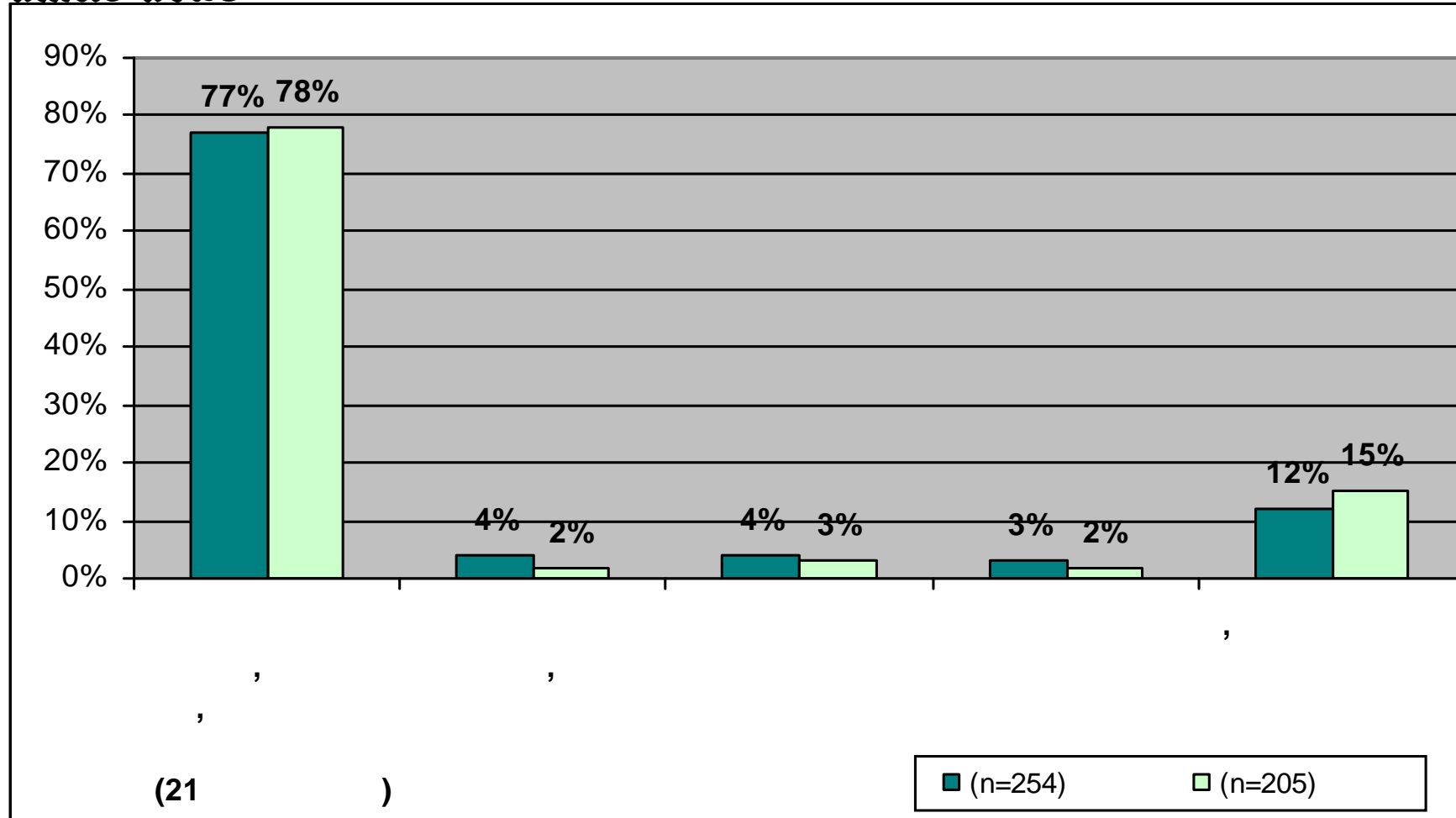




*

■

אחר פתיחה



(73%, 93%)

"

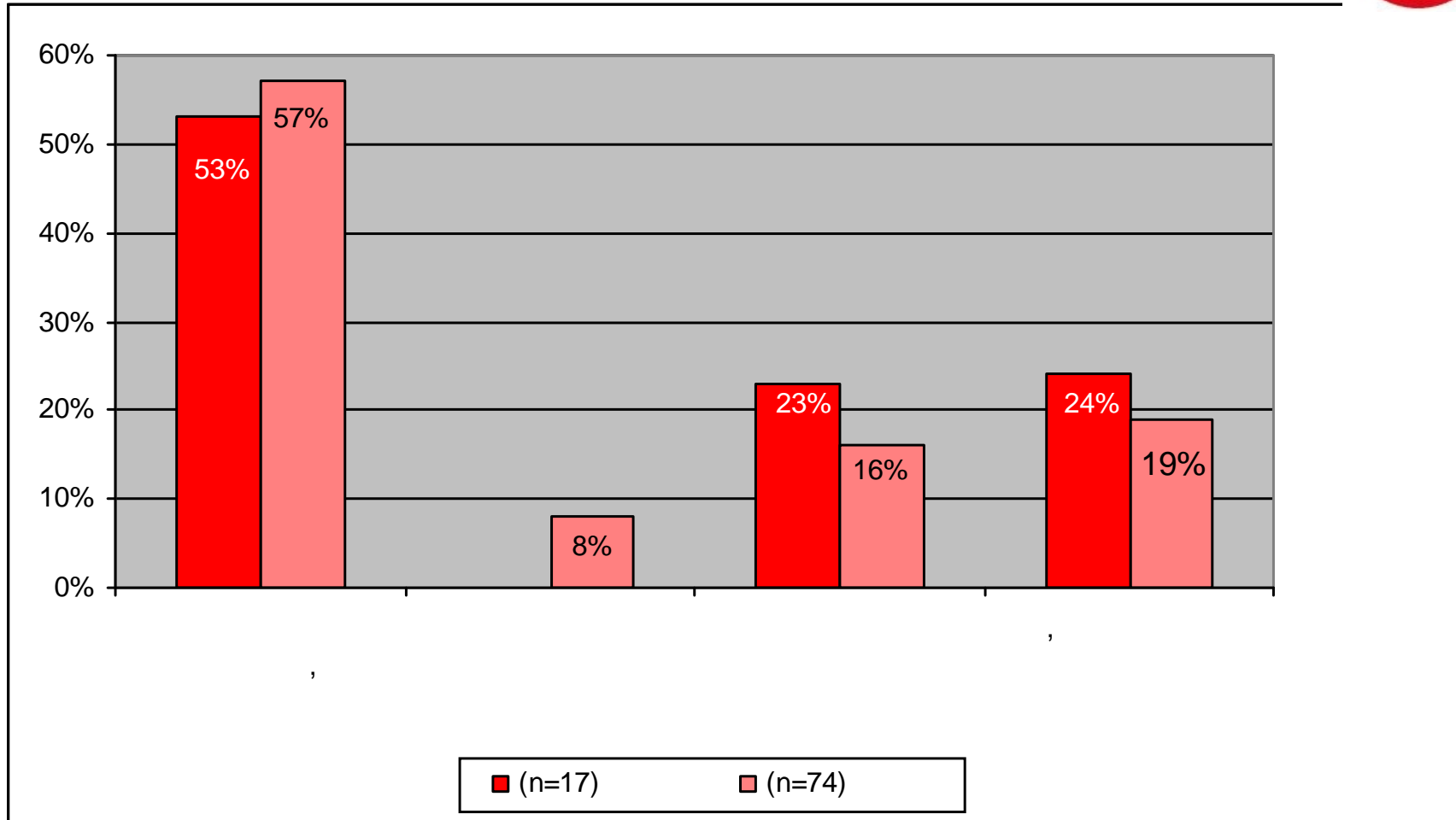
*

*

■



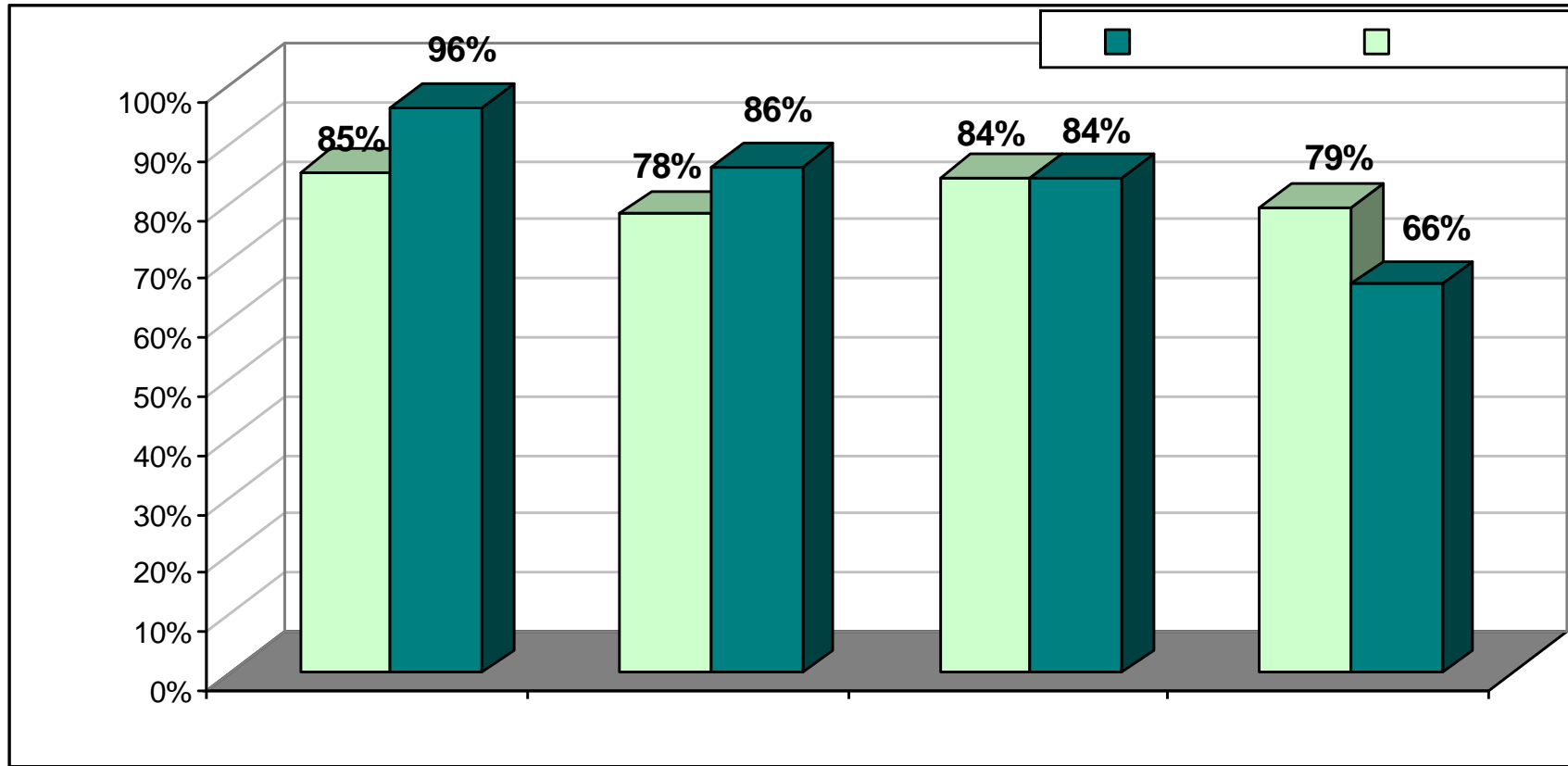
האם פתוחה



(26%, 6%)

"

*

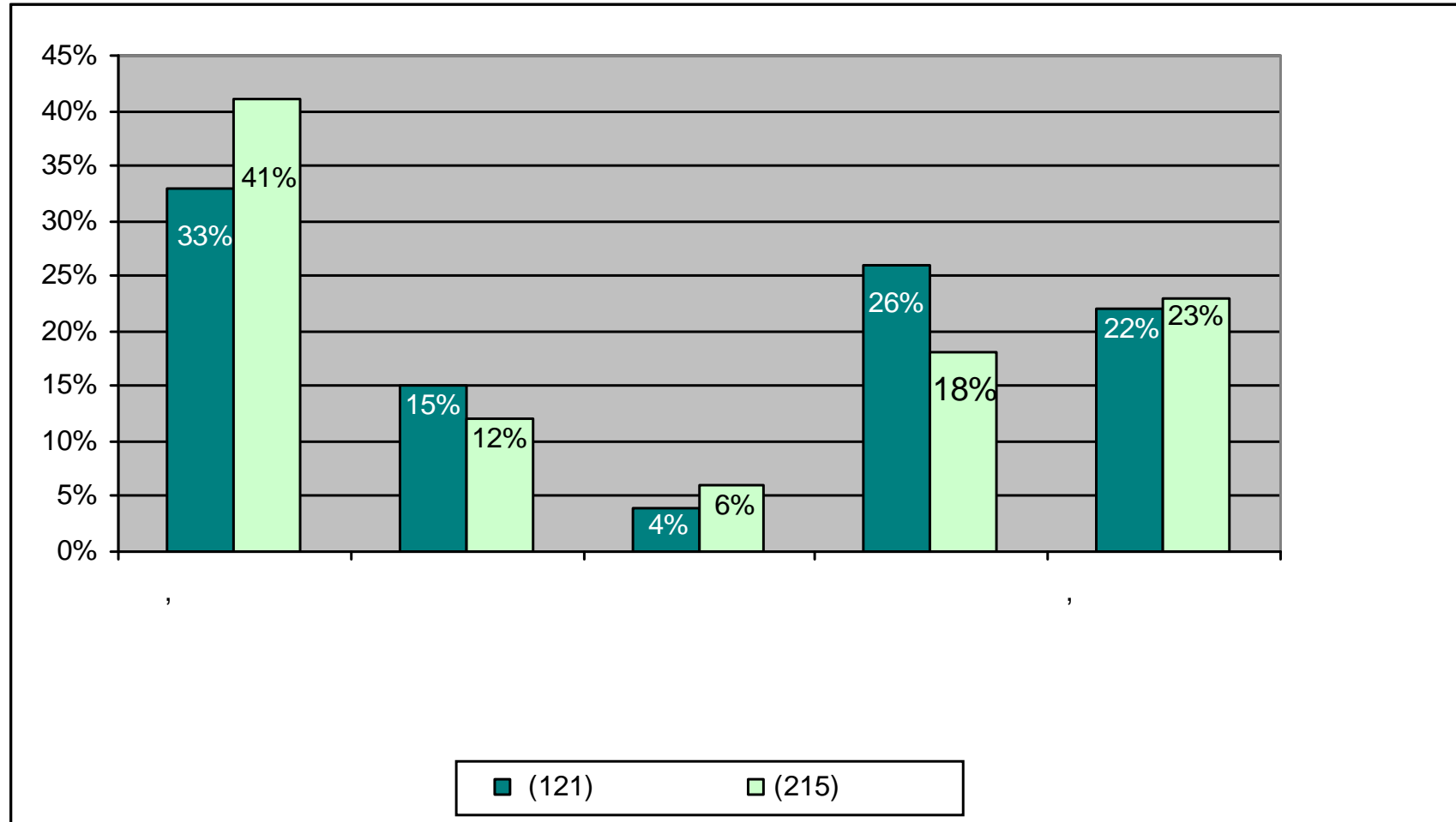


/ /



מצב פתוח

*



(77% ,

46%)

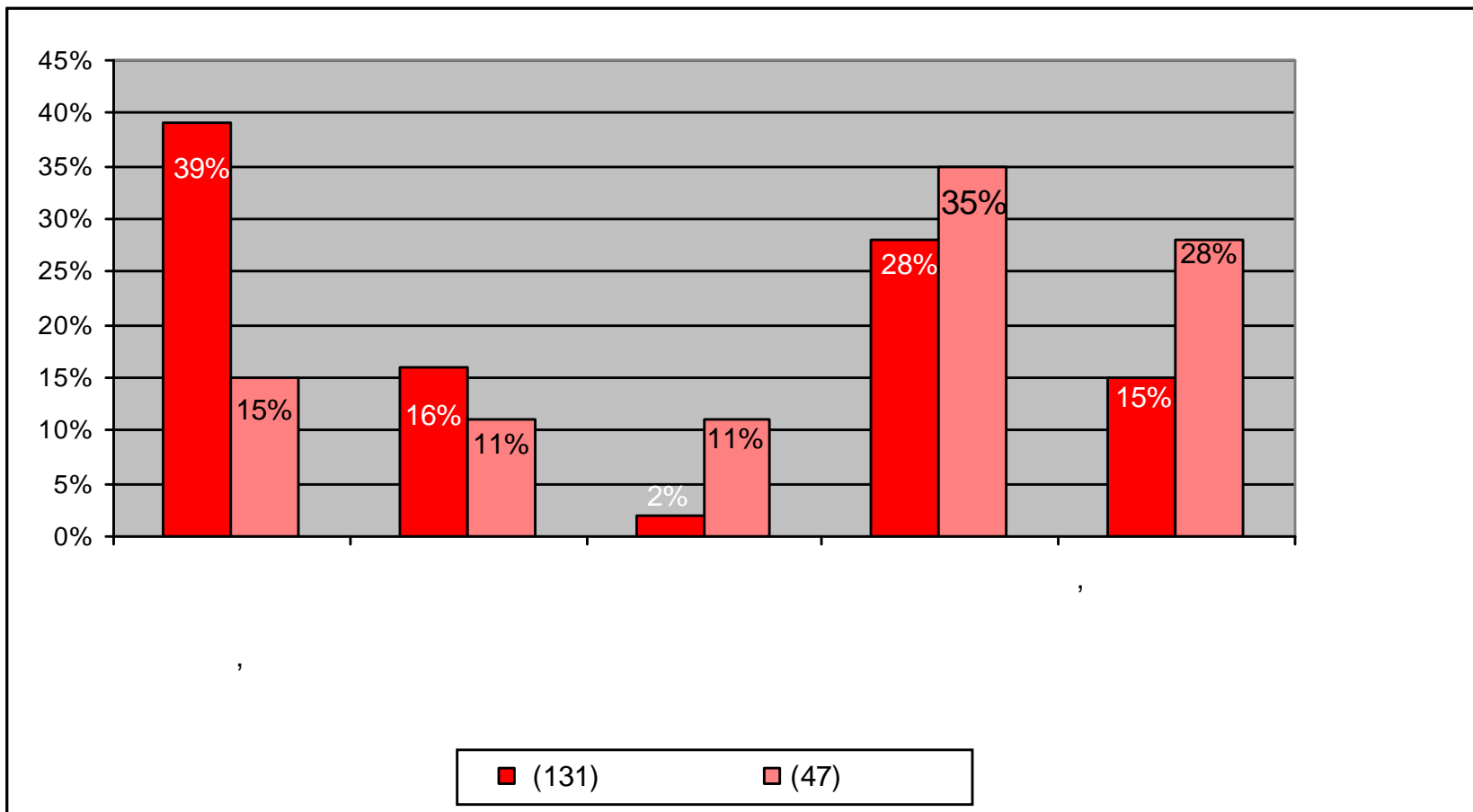
"

*



מצב פתוח

*



(20% ,

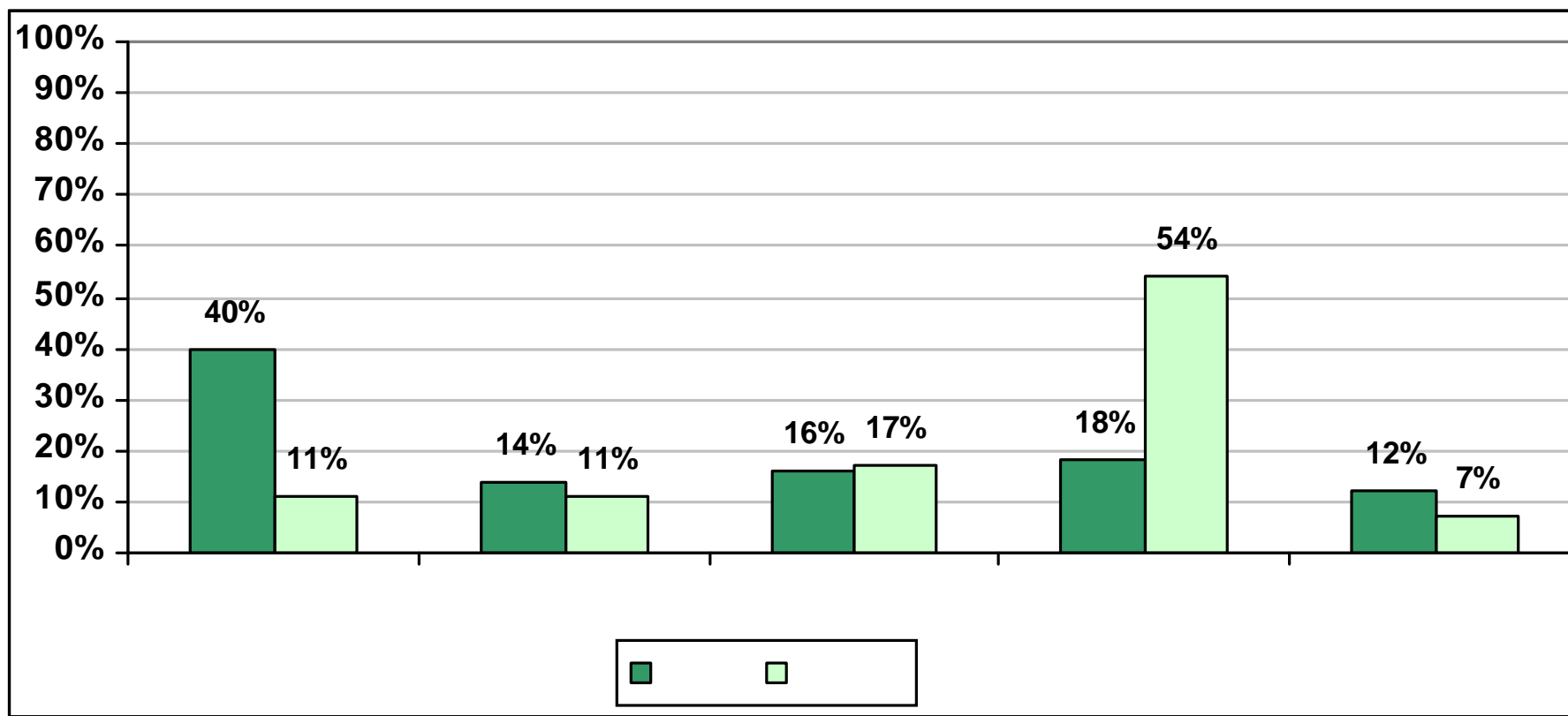
49%)

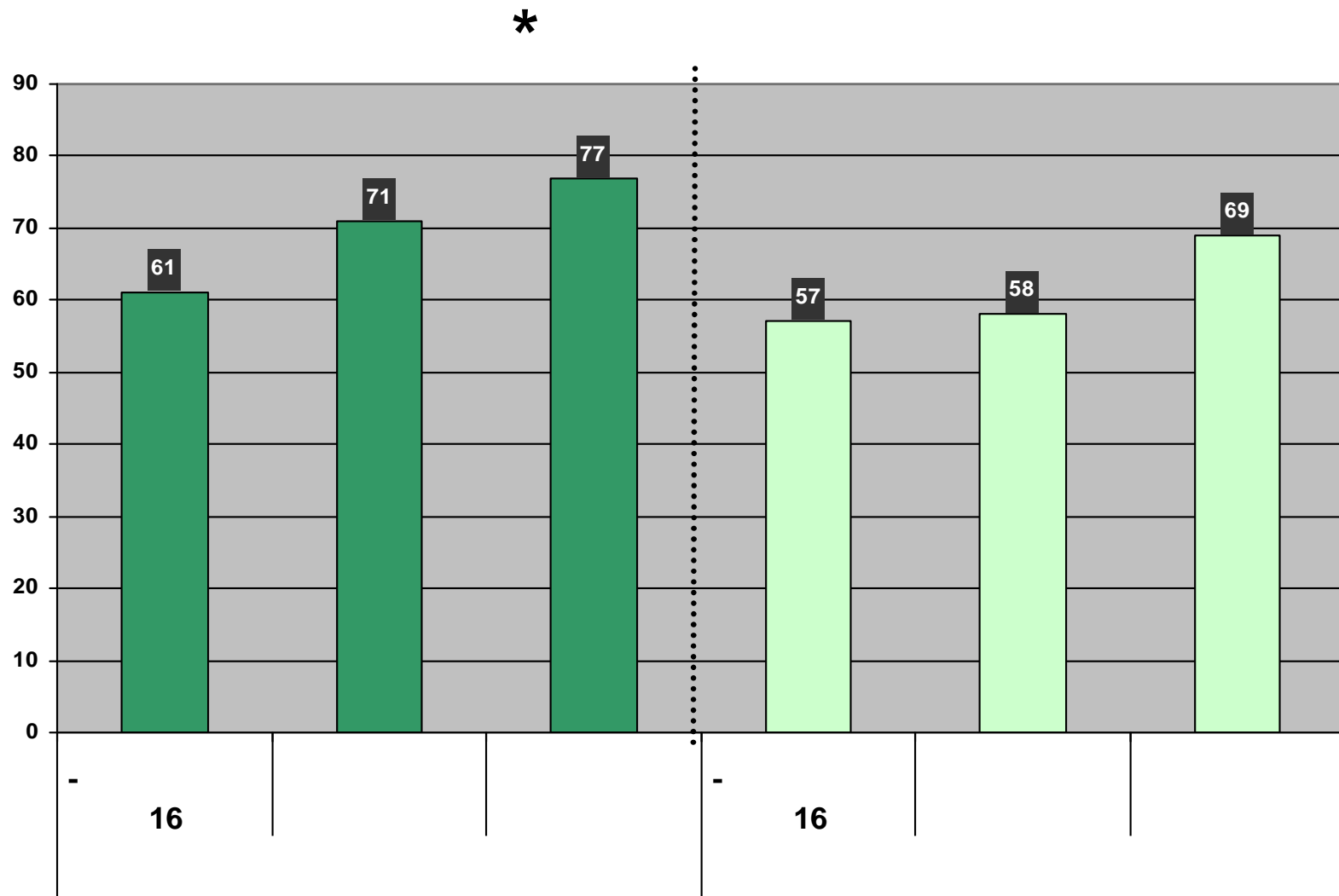
"

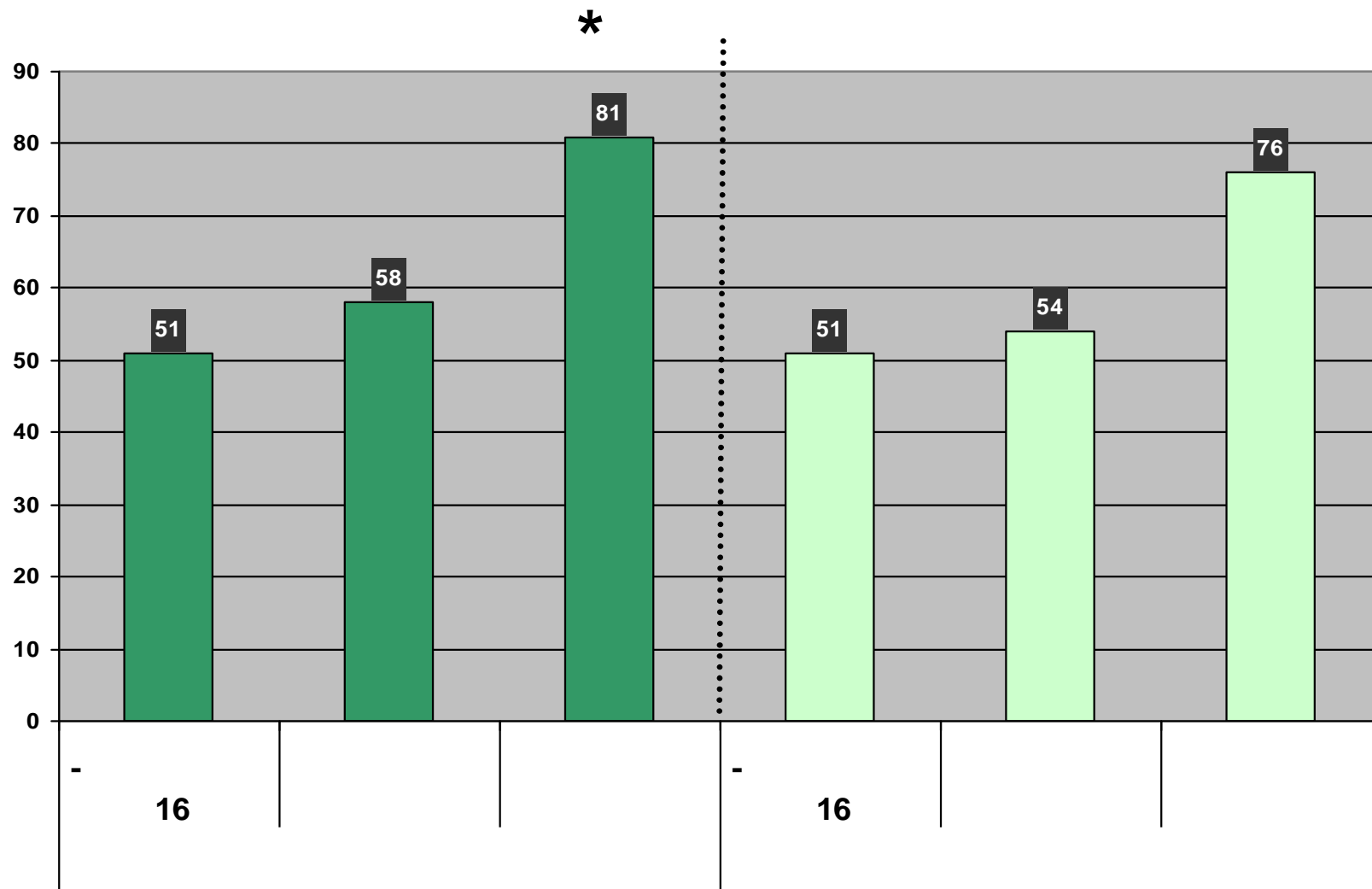
*



?







?

